



# The Benefice of Redruth with Lanner & Treleigh

SHARING GOD'S WELCOME & GROWING DISCIPLES

**A Rector to inspire and lead our enthusiastic & growing ministry team  
with oversight of five churches.**

The View from behind the  
Easter Cross on Carn Brea  
looking out across the benefice.



- ✓ Is the Holy Spirit prompting you to come to the Redruth area to lead a strong, motivated and creative team ministry?
- ✓ Are you able to help us re-visit our vision to reach out into our local communities sharing God's welcome and the love of Christ.
- ✓ Are you a listening person of prayer, sensitive to the call of the Holy Spirit able to identify and encourage vocations of all your people?
- ✓ Can you help us to reach out to a younger generation and help us to welcome and value them?
- ✓ Are you sensitive to the traditions of individual settings, with a heart for inclusion and diversity able to inspire and encourage?
- ✓ Can you help us reach out with the love of Jesus to the poor and broken, the elderly and the young, the sad and lonely, the artist and musician, and draw them into a community of faith around Him?

**Then read on.....**



# The Benefice of Redruth with Lanner & Treleigh

SHARING GOD'S WELCOME & GROWING DISCIPLES

## Introduction



Over the last six years the vision of our benefice, in and around Redruth, has been for our five churches to become closer and more united – so that in January we will officially become one parish with one PCC. We come from rather different worship traditions and enjoy the rich diversity and variety which that offers us all – and the space to be creative without undermining precious traditions.

We have a great enthusiasm and heart for drawing in people of all ages but especially the young – and we have been encouraged by the creativity with which we have been able to approach this and the way new people have joined us in recent times. We long to serve our communities and through our welcome, care and worship to share our faith with those around us.

We know that we are all getting older and for many of us our long-practiced traditions in worship have become very precious – but that we also need to reach out to children and their families in new ways. We know too that our local area has huge needs, and some hidden parts are amongst the worst levels of poverty in Europe. So it's time for us to renew our vision as to how, as a single parish, we can reach our community for Jesus.

Our benefice presents an exciting challenge in the heart of Cornwall, and we are seeking a Rector who can help us consolidate our leadership as a new PCC, to lead an effective and collaborative team, to refresh our vision to serve and witness to our communities, and to hold together and value our diversity of tradition whilst reaching out in new ways to a younger generation.



A new rector of Redruth can expect loving and prayerful support, an experienced and supportive ministry team and a joy in faith and outreach that mixes fun and reflection and a heart for living the gospel life in service of the community.



# The Benefice of Redruth with Lanner & Treleigh

SHARING GOD'S WELCOME & GROWING DISCIPLES

## CONTENTS

- ✓ Introduction
- ✓ Letter from Bishop Philip
- ✓ Letter from Archdeacon
- ✓ A View of the Deanery from Rural Dean & Deanery Lay chair
- ✓ The Local Area
- ✓ Our vision
- ✓ Our new priest
- ✓ Our Churches and their communities
- ✓ Initiatives and Events Across the Teams
- ✓ The Ministry Team
- ✓ Worship and services
- ✓ Our schools
- ✓ Safeguarding
- ✓ Rectory
- ✓ Contacts
- ✓ Financial Information



The town of Redruth with St Euny Church  
In the foreground





# The Benefice of Redruth with Lanner & Treleigh

SHARING GOD'S WELCOME & GROWING DISCIPLES

## OUR BISHOP

In the Diocese of Truro we are deeply committed to following what we call The Saints' Way. We see ourselves as part of a story of the grace of God, made manifest in Cornwall, which stretches back many hundreds of years, possibly to the very earliest days of the christian faith. It's a story that calls us on into the future too, in loving mission, ministry and service.

As we follow The Saints' Way we will be deeply committed to Christ and to all that he calls us to be and to do; and to Cornwall, this very special place with its own particular culture, history and identity.

We can only follow that way faithfully if we see it as our corporate calling, as the body of Christ, mutually accountable to one another. So we encourage ministers of the gospel to come and join us here who are committed to setting the whole people of God free in their God-given calling, to make Christ known here in Cornwall, today.

So we seek clergy who are faithful in prayer and worship, and who are missional in imagination and heart; those with a pastoral passion for people and communities and their flourishing. We are looking for joyful and hopeful disciples and ambassadors of Christ: people who share the Gospel with energy and commitment, in word and in deed - and above all with love - and who enable the communities they lead to do the same.

We are looking, therefore, for people who, on this journey, are curious and realistic, creative and determined and are deeply hopeful of a better future. But we also want to work with those who recognise that they are not perfect and will sometimes fail, who learn from their mistakes and will take the initiative in seeking reconciliation with others.

We are convinced that all ministers need the support and companionship of others and we help priests in a number of ways so that they never work alone. In this spirit, we encourage those who can forge good relations with others, and actively collaborate with them for the sake of the Kingdom, to join us here in the Diocese of Truro.

I pray that as you consider this opportunity you might discern God's calling and purpose for you in this next chapter of your own discipleship, mission, ministry and service.

THE RT REVD HUGH NELSON  
BISHOP OF ST GERMAN'S





# The Benefice of Redruth with Lanner & Treleigh

SHARING GOD'S WELCOME & GROWING DISCIPLES

## OUR ARCHDEACON



Through the recent diocesan 'On the Way' deanery consultation process a vision has been born for the growth of a variety of new ministries both lay and ordained that has enabled deaneries to engage with renewed confidence the diocesan call to 'serve the poor, reach the young and care for the earth.' In particular, Carnmarth North Deanery have enjoyed good relationships, shared fellowship, and a vision for outreach across the parishes that has resulted in a renewed commitment to working together to see God's Kingdom grow. One of the fruits of this has been the appointment of a full time Deanery Missioner to encourage the parishes to cooperate in evangelism.

The benefice of Redruth with Lanner and Treleigh is situated in the heart of the Deanery with its main towns of Camborne and Redruth, rural villages and miles of stunning coastline. The benefice is a key link between rural and town, country and coast, residential and vocational and over recent years has enjoyed a stability that has served the deanery well.

Consisting of five churches of a range of tradition the benefice is committed to working together to bring the good news of Jesus to this unique part of Cornwall.

The benefice is firm in its intent regarding its call to "Sharing God's Welcome and Growing disciples" with the hope that people served by the benefice will come to meet Jesus. This vision is shared with the whole deanery, making this a God-given opportunity for the flourishing of new vision, mission initiatives and leadership both in benefice and deanery.

Following on from the 'On the Way' consultations and the development of the new Deanery Plan we are now looking to appoint a new incumbent to lead the benefice forward in mission and ministry. The benefice are therefore looking for an experienced oversight minister to lead the ministry team and help the benefice move forward in exploring new ways of doing Church differently.

As well as being an opportune time for a minister to bring new vision to Redruth with Lanner and Treleigh, the benefice and diocese provide an ideal place for a minister to thrive at a personal level. As a diocese we are committed to the wellbeing of our clergy and have fully embraced the challenge of investing in our vicarages. The Vicarage is being refurbished to create a spacious family home along with garden.

We are thus praying for a new minister who will be called and committed to growing the Kingdom of God in this fascinating and varied part of Cornwall and are trusting in the Lord to bring the person of His choosing to serve Him in this next important chapter of Christian witness in Redruth with Lanner and Treleigh.

*Nick*

The Ven. N Shutt

Interim Archdeacon of Cornwall



# The Benefice of Redruth with Lanner & Treleigh

SHARING GOD'S WELCOME & GROWING DISCIPLES

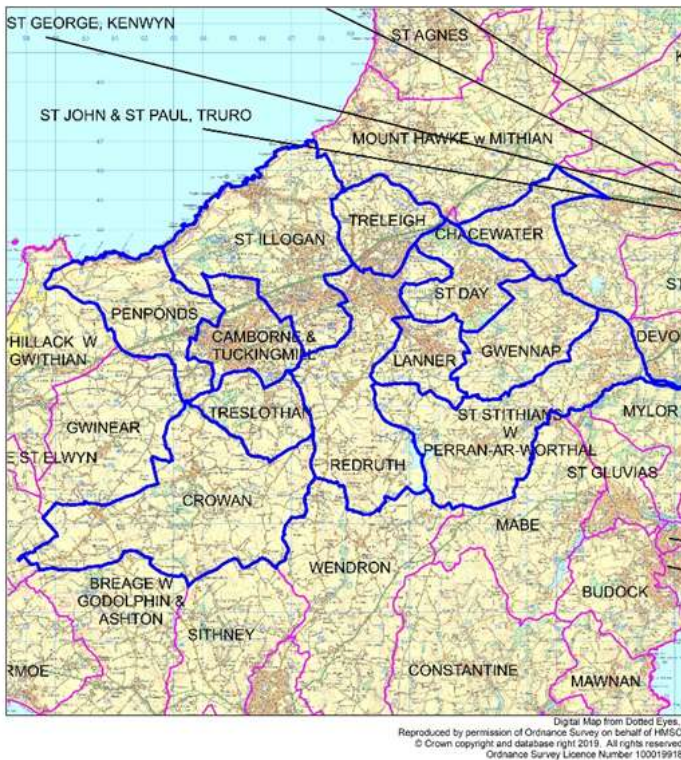
## A View of the Deanery: Rural Dean Revd Graham Adamson

"Living God's abundant life; sharing the good news of Jesus."

Carmarth North deanery's vision statement sums up our direction and is a real statement of intent. Over the course of 2022 our deanery undertook a process called 'On the Way', a diocese-wide initiative by which each deanery was called to discern a new missional vision that aims to be both fruitful and sustainable. The deanery plan is linked here. [The-Deanery-Plan.pdf](#) (or on the [vacancy page of the Redruth website](#))

Together we arrived at a deanery vision statement as follows:

Living God's abundant life; sharing the good news of Jesus



The map here locates Redruth with Lanner and Treleigh in relation to the other parishes of Carmarth North Deanery shown in blue. There are 18 churches in the deanery, divided between four ministry areas.

As you will read elsewhere in the profile, the parish is wonderfully diverse, from beautiful wilds, agricultural land, industrial estates, the villages and the town with its mix of heritage and creativity. This is reflected right across our deanery which combines some of the best of Cornwall right on our doorstep.

The next Rector of Redruth joins us at a time of significant change, with the parish of St Illogan also in vacancy at the time of writing. The deanery chapter has a reputation for collegiality and friendship across the differences of churchmanship, and we look forward to welcoming our new members in the not too distant future!

With my prayers and best wishes

Graham Adamson

Rev Graham Adamson-  
Rural Dean & Deanery Missioner  
Carmarth North Deanery

"Living God's abundant life; sharing the Good News of Jesus."







# The Benefice of Redruth with Lanner & Treleigh

SHARING GOD'S WELCOME & GROWING DISCIPLES

## The Local Area



*Applicants are strongly encouraged to look at the website for in-depth articles about the area, the churches, the ministry team and the people. [www.redruthchurch.org.uk](http://www.redruthchurch.org.uk)*

*For an accurate picture of the County of Cornwall you might like to watch: [BBC iPlayer - Cornwall with Simon Reeve](#) and its follow up programme.*

*For a more satirical view – Dawn French’s Radio programme on [BBC Sounds – “Wosson Cornwall”](#)*

Redruth has a population of about 15,000 people, about a third of the total in the Camborne Redruth conurbation making it one of the most densely populated in Cornwall and it presents a wonderful challenge for a new rector.

Geographically, it sits alongside the A30, the main arterial route to the rest of the country and also on the main railway line with direct services to major cities. The town lies four

miles from the North Coast and its rugged surfing beaches and eight miles from the South coast noted for calmer seas, sailing and tourism but surrounding Redruth are the remains of hard rock mining that once made it one of the richest towns in the land.

The demise of tin and copper mining caused the collapse of the local economy and so parts of the benefice are amongst the most deprived in Europe which presents a special challenge for ministry.

Although unemployment rates are low, many jobs are low paid and seasonal leading to problems of unaffordable housing. The coastal areas are popular with second homeowners which means that properties in and around Redruth are in great demand from local people driving up the price of property whether to buy or to rent.

So while the challenges of the area are complex, the compensation for those who are mobile is the wonderful surroundings populated by a friendly, welcoming people.

Our challenge is not only in living out the Gospel message but making it relevant to people living on the margins of our communities.





# The Benefice of Redruth with Lanner & Treleigh

SHARING GOD'S WELCOME & GROWING DISCIPLES

## Our Vision

Our vision is to work as a team of five churches (plus Four Lanes Methodist Church), building faith as a central part of our local communities. Each congregation is enthusiastic in developing its own identity through recognising and supporting the gifts of its members through loving, caring attitudes and determination to serve the community becoming ever-more productive as they work together, sharing aspirations, workload and successes. But importantly the links between the churches and the determination to help each other makes ours a true team ministry.



We are building vibrant communities through worship and discussion, through community ventures such as food-pantries and warm spaces, toddler groups and, through the arts and other alternative ways of reaching the communities outside church.

Through the practical loving of our surrounding communities we hope that people will come to meet Jesus and find it easy to step over the thresholds of our churches.

Our regular study and home groups have been an important part of building faith and are integral to building our vision for the Team. Details of future activities and courses can be found in the Five Alive Magazine available on the website, but past themes have included materials as diverse as 'Living in Love and Faith'. lent and advent courses, the Sunday Readings, and discussions around the BBC series on Scotland's Sacred Islands.

*Starting and ending in prayer, with fellowship at the centre, it keeps me coming back, week after week.'*



*'This has been such an uplifting experience. I've learned a lot about my attitude to prayer and made closer friendships.'*





# The Benefice of Redruth with Lanner & Treleigh

SHARING GOD'S WELCOME & GROWING DISCIPLES

## Our New Rector



**Rector of Redruth with oversight  
of the Team of Five Churches**

Essential	Desirable
A person of prayer, sensitive to the call of the Holy Spirit and ready to love and understand the people of Cornwall and the communities around Redruth	Understand what is required to work with rural and deprived communities.
An experienced team leader who can build a strong and united leadership and identify and develop gifts, leadership and vocations across the benefice.	Have experienced or have perspective of working life beyond the church.
Experience and ability to help us renew and develop our vision and grow our congregations, leading us well through the changes ahead	Be competent with Information Technology including ZOOM.
Able to help us share our faith and deepen our care for our community – and especially with children and young people and their families.	Full driving licence
Excellent pastoral and communication skills, able to help us seek creative new approaches in worship yet also to treasure and honour our rich diversity of traditions - a servant who serves <i>all</i> God's people with tenderness and humility and open arms.	
With a heart for ecumenism especially in building relationships with the Methodist Circuit.	
Have a good sense of their own strengths and weaknesses and ability to delegate appropriately.	

One of our church wardens summarised the need as,

*"the person should be intuitive and possess an emotional intelligence to enable them to work effectively within the team and the people of Redruth, and to quickly comprehend and grow to love the unique character of this wonderful area of Cornwall."*



# The Benefice of Redruth with Lanner & Treleigh

SHARING GOD'S WELCOME & GROWING DISCIPLES

## SUPPORT & WELLBEING

We recognise that this and most clergy roles are demanding. Providing support and caring for your wellbeing is important to us. There is a commitment at senior level and the organisation generally to:

- ensure that, at a strategic level, clergy wellbeing is explicitly referenced, and embedded in, all projects and work;
- it is adequately resourced and funded; and
- that we champion clergy wellbeing, challenge unsupportive behaviours and attitudes, and lead by example.

The diocese has a Clergy Wellbeing Group, with the aim of embedding the principles of the Covenant for Clergy Care and Wellbeing into the day-to-day policies and practices of the diocese.

The group has agreed an action plan based on the themes and actions recommended in the booklet "How Clergy Thrive" by Liz Graveling and the useful resources guides that accompany it.

The diocese offers:

- occupational health and other confidential support services.
- a new pastoral supervision scheme.
- a page on the diocesan website dedicated to clergy wellbeing with resources and information.
- regular wellbeing articles, tips, and information in our clergy newsletter - Ministry Matters.
- workshops for PCCs to discuss clergy wellbeing boundaries/expectations, and a plan to run more.
- encouragement to clergy to report sick absence, offering to support them more effectively when they are ill including more frequent OH referrals.
- a revised MDR process to include (among other things) questions encouraging clergy to reflect on their physical, emotional and spiritual wellbeing



# The Benefice of Redruth with Lanner & Treleigh

SHARING GOD'S WELCOME & GROWING DISCIPLES

## Our Churches and Their Communities

Please see the website [www.redruthchurch.org.uk](http://www.redruthchurch.org.uk) for fuller accounts and more detail.

The five churches that make up the Redruth Team have a welcoming, open-hearted love of their communities, would describe themselves as inclusive and non-judgemental and all demonstrate a desire to bring others to know and share in the love of God.

Each church has its own facilities, and each church leads and takes part in a huge number of events and initiatives with a healthy support of each other's efforts. The facilities and events are listed elsewhere.



**St Andrews Pencoys and Christchurch in Lanner** are currently looked after mostly by one of our PTO Priests but are both very different. **Pencoy's** is closely linked with **Four Lanes Methodist Church** and services alternate between the Church and the Chapel under the acronym **FLAPJACK** (*Four Lanes And Pencoy's Join And Cheer the King*). That close link with the Methodist Church was formalised by the Bishop and the Chair of the Methodists in Cornwall, allowing ordained ministers to preside at communion in both venues. That union is at the heart of the village and is supported by the relationship with Pencoy's School, the village pub and the male voice choir etc. A new Rector would be part of developing the amazing work that has already been done.

**Christchurch in Lanner** has a thriving Sunday School which takes place within the service in a side area of the church, the children being called upon to serve, ring bells and process! It hosts the one BCP eucharist in the Team in its midweek service. There are good links with the local methodists and Lanner school and like Four Lanes, their food pantry which is always open is well used by those struggling in the community.

**The St Euny** congregation may be small but in recent times has produced a Reader/LLM and a Pioneer Minister in training.

The congregation is proud of their mining heritage and the support of English Heritage and host a mining service each year. There is a mixture of ordained and lay led services. They are strongly focussed on outreach through the open café which is well attended and provides an important service especially to the lonely.



**St Stephens Treleigh** has an industrial estate, a primary school and popular pub as its neighbours but has a lively congregation who are wonderful at supporting initiatives around all the churches. Pastoral visiting and the care of others is a particular strength as is their enthusiasm and commitment planning their own weekly drop-in aimed at the parents of Treleigh School.





# The Benefice of Redruth with Lanner & Treleigh

SHARING GOD'S WELCOME & GROWING DISCIPLES

**St Andrews Redruth** is closest to the centre of the town enjoys its traditions of using incense and having robed servers. It hosts community events and the civic services and has a close relationship with the all the local schools under the banner of the Redruth Learning Group. Redruth is a town known for its artistic life and the church is no exception in its own creativity and in hosting others and encouraging new projects that will build the town community.



## Initiatives and Events Across the Team



Across the team there is a huge range of activities which help bring in the surrounding communities and or provide faith building opportunities for those in our churches.

In recent times the 'warm bank' project has furthered the work of the food bank and food pantries encouraging people to stay to eat breakfast and to chat to the volunteers who run it. People from across the congregations assist and it has been wonderful to see the development of pastoral vocations.

The St Euny Open-Café evolved into a support group for vulnerable people who were at risk of isolation, and the decision was made to combine the day in which we held our weekly service of Holy Communion with the Open Café. Since the end of the pandemic, it has seen an extraordinary growth.

You can read Lucie's article on the St Euny web Page linked here: [St Euny's Page](#).

We try to open our churches as much as possible to provide places of reflection and calm in amongst all this activity.

St Andrews Redruth houses the Benefice Office and all but one of our churches have halls attached or close by which are a key resource in our work.





# The Benefice of Redruth with Lanner & Treleigh

SHARING GOD'S WELCOME & GROWING DISCIPLES

The Annual Arts Festival week is timed to coincide with Murdoch Day in the town and brings in the artistic community as well as schools and of course the people of the town to see the exhibits – always on a theme.

Workshops have included aerial dance, circus skills, storytelling, clay and craft and dance. The poetry, pints and pasties evening is very popular bringing in numerous people from the surrounding area and the festival provides wonderful opportunities for a new rector to get to know people.



On the St Andrews tab on the webpage ([redruthchurch.org.uk](http://redruthchurch.org.uk)) there are links to past festivals with photographs and video!

Social groups of all sorts from the Treleigh Ladies to the Crafty People and from the open café to the Redruth Randoms musical evenings all help us connect with those who don't normally attend services, giving opportunities for outreach.

Four Lanes  
FLAPJACK



St Euny Bell-Ringers



We give, we  
create, we chat,  
we have fun,  
and we pray.

The Crafty People in the Crypt





# The Benefice of Redruth with Lanner & Treleigh

SHARING GOD'S WELCOME & GROWING DISCIPLES

## The Ministry Team

The ministry team has grown in recent times and is comprised of an eclectic group of ministers with different styles of churchmanship and levels of experience. We are always seeking to discover and encourage the vocations and gifts of our people and to enable them to learn and seek appropriate training. We are reflective about what we do and always seeking to learn and to improve and the last year has seen the addition of a newly trained reader, a parish nurse and a pioneer minister in training to our two 'retired' priests, a curate and a reader. The team provides a solid base of support for the rector, acting as a sounding board and a place of ideas but above all a place of care and prayer.



The main team meets weekly for fellowship, to discuss the lectionary readings for the coming Sunday and a full agenda of topics that support the Rector in their role. Meetings are open and honest with occasionally robust discussion but always with a sense of humour. We have an administrator who supports the Rector and the ministry team working 10 hours per week and occasionally more if needed but duties do not include attending meetings. The administrator works from home and in the Benefice office.

Part of the wider team includes worship leaders, and the ZOOM morning prayer has encouraged some people to lead intercessions and read in the main church services. The Dhiworth-an-Gollon (From the Heart) ladies' singing group leads creative services such as the Good Friday watch and the Carol Service.

Further details of personnel can be found on the Team website.

[Who's Who in The Team? - The Benefice of Redruth with Lanner & Treleigh \(redruthchurch.org.uk\)](http://redruthchurch.org.uk)

The Rev'd Haley Preston chaplains for five care settings linked with the Benefice.



Dhiworth-an-Gollon lead the Carol Service with Redruth Town Band at a full St Andrews Redruth.





# The Benefice of Redruth with Lanner & Treleigh

SHARING GOD'S WELCOME & GROWING DISCIPLES

## Worship and services led by the ministry team

CHURCH	1st Sunday	2nd Sunday	3rd Sunday	4th/5th Sunday	Weekdays
<b>ZOOM SERVICES</b>	<b>Morning Prayer Monday - Saturday 9 a.m.</b>				
<b>St. Andrew Redruth</b>	09.30 Informal HC	09.30 Holy Communion	09.30 Holy Communion	<b>10.30 BENEFICE SERVICE *</b>	10.00 Wednesday HC
<b>St. Euny Redruth</b>	11.15 Holy Communion	11.15 Service of the Word	11.15 Holy Communion	<b>10.30 BENEFICE SERVICE *</b>	13.30 Wednesday HC
				18.00 Evensong (BCP)	
<b>St. Andrew Pencoys alternates with Chapel</b>	11.15 HC Chapel	11.15 Family Event	11.15 Service of the word - Chapel	<b>10.30 BENEFICE SERVICE *</b>	18.00 Wednesday HC
	6.00 First Sunday Event - alternates with CC Lanner	12.30 Holy Communion			
			18.00 HC Church		
<b>Christchurch Lanner</b>	09.30 Holy Communion	09.30 CHAMP	09.30 New Music HC	<b>10.30 BENEFICE SERVICE *</b>	11.00 Wednesday (BCP)
		15.00 Holy Communion			
<b>St. Stephen Treleigh</b>	11.15 Informal HC	11.15 Holy Communion	11.15 Holy Communion	<b>10.30 BENEFICE SERVICE *</b>	10.00 Thursday HC
<b>Rotating around the 5 Churches and Chapel *</b>	<b>10.30 BENEFICE SERVICE</b> <b>5<sup>th</sup> Sundays are always Benefice Services - ('Last' Sundays until the appointment of a new rector)</b> <b>Healing Service on the 1st Tuesday of the month</b>				



The Gospel is proclaimed at a recent benefice service at St Andrews



# The Benefice of Redruth with Lanner & Treleigh

SHARING GOD'S WELCOME & GROWING DISCIPLES

## Teamwork



Church yard clean-ups and garden parties!



Holiday Club 2023 pose on the bridge In Trebah Gardens.

The Redruth Randoms Musical group.



Warm Bank and Open Café Initiatives across the Benefice



Redruth, Lanner and Treleigh's mining history is embedded everywhere in the local landscape and each year we remember those whose skills and determination are commemorated in the stones left behind.

St Euny is the focal point.

Pictured: the open-air Service at Wheal Bassett stamps for the mining festival.





# The Benefice of Redruth with Lanner & Treleigh

SHARING GOD'S WELCOME & GROWING DISCIPLES

## Our Schools

We have a good relationship and close ties with all the schools in our area. All are adjudged by OFSTED as being at least 'good' and most have academy status. None are Church Schools, but faith initiatives are generally well received.

The schools make good use of all the churches for services, presentations and lessons and we work hard at providing opportunities for connection. The best example of this is probably the annual arts festival where the schools are invited to send children for free creative workshops which have ranged from craft to team building challenges and from community sculpture to drama.



Along with the other Christian denominations we are welcomed to take assemblies on a regular basis. Currently there is no "Open-the-Book" team, but this might be something to investigate in the future, especially if we can forge closer links with other denominations.



Penoweth School <https://penoweth.croftymat.org>



Pencoys School <https://pencoys.croftymat.org>

Trewirgie Infant School <https://www.trewirgie-inf.cornwall.sch.uk/web>

Trewirgie Junior School <https://www.trewirgie-jnr.cornwall.sch.uk/>



Lanner Primary School <https://Lanner.croftymat.org>

Treleigh Community Primary School <https://www.treleigh.cornwall.sch.uk>

Redruth School (11-16) <https://www.redruth.cornwall.sch.uk/>



Curnow School (special School) <https://www.curnow.cornwall.sch.uk/>

Students leaving Redruth School go on to take A Levels and tertiary education at either Cornwall College <https://www.cornwall.ac.uk/> nearby in Pool or Truro College <https://www.truro-penwith.ac.uk/> which is a thirty minute bus ride away.





# The Benefice of Redruth with Lanner & Treleigh

SHARING GOD'S WELCOME & GROWING DISCIPLES

## Safeguarding Statement

There is a strong commitment to Safeguarding across the Team and each church has a safeguarding officer who has undergone leadership level training.

The safeguarding officers are overseen by a Safeguarding coordinator for the team who is also a diocesan volunteer trainer.

We have united events for safeguarding training including Domestic Abuse awareness. The Team uses the Parish Safeguarding Dashboard and the Safeguarding hub for keeping track of safer recruiting.

We have a strong record of providing training for everyone not just for those for whom it is required. This includes bespoke training where appropriate and makes use of ZOOM as well as meeting face to face.

Safeguarding is seen as part of good discipleship and integral to our outreach work.



It is not just the organ and bells at St Euny sometimes....





# The Benefice of Redruth with Lanner & Treleigh

SHARING GOD'S WELCOME & GROWING DISCIPLES



**The Rectory** Is a modern 4-bedroom detached property in a quiet area of the town close to a cricket ground, a rugby field and one of the primary schools and very close to the scenic, historic walks of the "Great Flat Lode".

## **Comprises of:**

A two storey four-bedroom detached house.

The accommodation within is laid out over two levels and briefly comprises the following:

Ground Floor: Hallway, office, living/dining room, sunroom, kitchen/breakfast room, utility, and W.C.

First Floor: Landing, front left hand side bedroom, rear left hand side bedroom, bathroom, rear right hand side bedroom, front right-hand side bedroom and ensuite shower room.

Outside: Small rear and side garden, garden shed. Parking

Gas central heating

EPC rating C/75

## **Contacts**

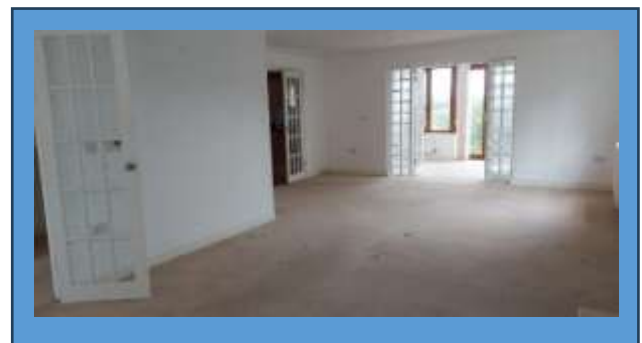
Redruth Team Administrator:

[enquiries@redruthchurch.org](mailto:enquiries@redruthchurch.org)

## **Links to Further Information**

**Poverty statistics** [Church Urban Fund Look up tool https://cuf.org.uk/lookup-tool](https://cuf.org.uk/lookup-tool) and search Treleigh, Lanner and Redruth.

**The Diocesan vision** [Our Vision - The Saints' Way - Truro Diocese : Truro Diocese ..](#)

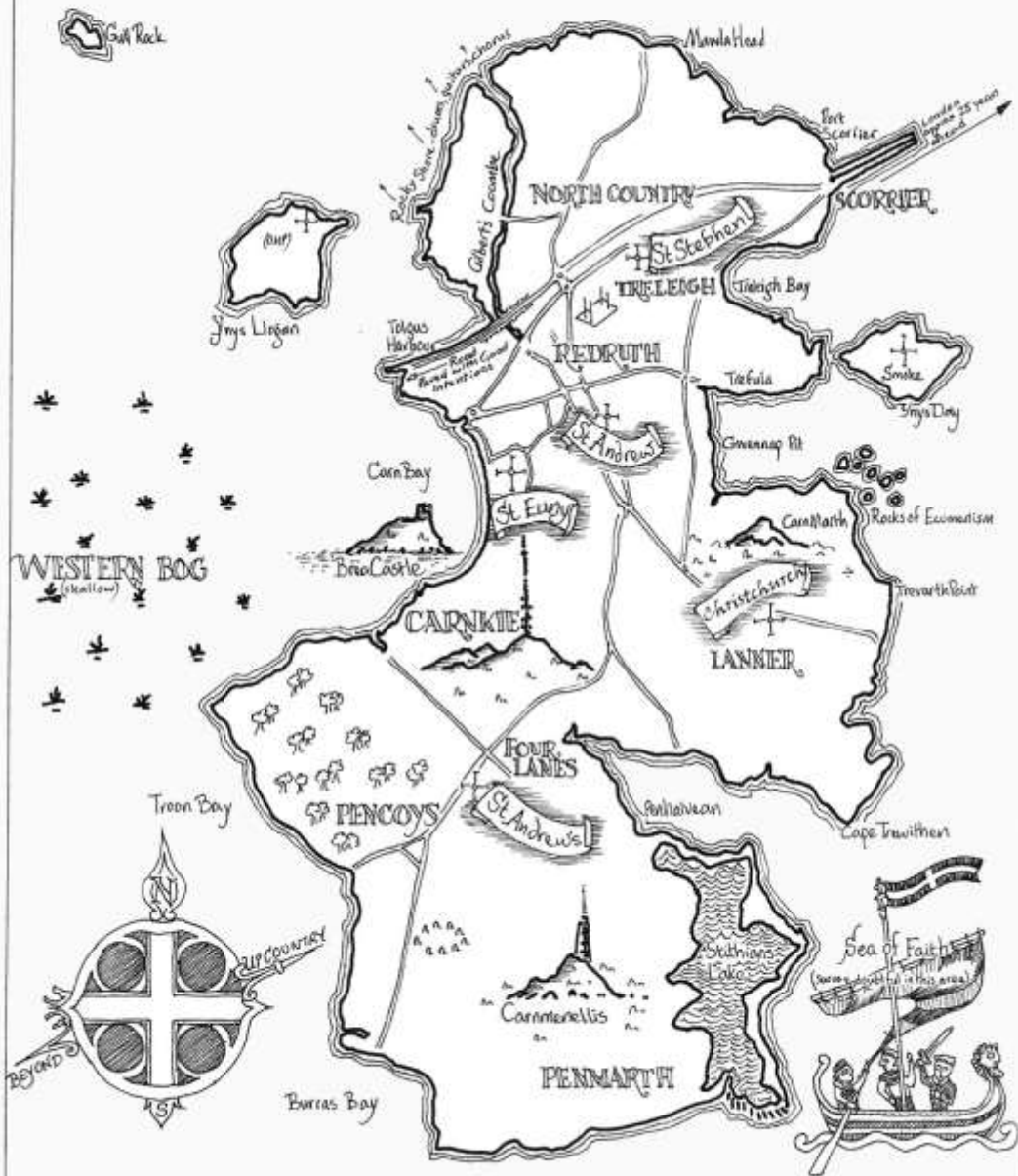




# The Benefice of Redruth with Lanner & Treleigh

SHARING GOD'S WELCOME & GROWING DISCIPLES

Map of the Benefice  
Revd Canon Simon Cade







# The Benefice of Redruth with Lanner & Treleigh

SHARING GOD'S WELCOME & GROWING DISCIPLES

## Redruth Benefice Financial Information and Statistics

2022

	Redruth PCC St Andrew Redruth, Pencoys and St Euny	Treleigh PCC	Lanner PCC	Total
	£	£	£	£
<b>Income</b>				
Voluntary income and gift aid	54,870	15,329	11,046	81,245
Grants	5,617	2,435	2,882	10,934
Fundraising	5,618	1,833	1,135	8,586
Fees	10,234	4,596	141	14,971
Rental and other income	6,602	-	2,104	8,706
Insurance claim	2,709	-	-	2,709
	<b>85,650</b>	<b>24,193</b>	<b>17,308</b>	<b>127,151</b>
<b>Expenditure</b>				
Mission, donations and evangelism	3,288	-	600	3,888
MMF	35,000	12,000	10,275	57,275
Salaries and honoraria	5,372	1,200	50	6,622
Church running expenses	17,382	5,800	5,348	28,530
Utility bills	9,080	3,308	3,511	15,899
Major repairs and insurance claim	14,684	-	-	14,684
	<b>84,806</b>	<b>22,308</b>	<b>19,784</b>	<b>126,898</b>
<b>Surplus/(deficit for year)</b>	<b>844</b>	<b>1,885</b>	<b>-(2476)</b>	<b>253</b>
<b>Reserves at 31 December 2022 (after transfers)</b>				
General reserves	47,346	14,571	6,183	68,100
Designated reserves	34,639	-	-	34,639
Restricted funds	6,409	1,598	361	8,368
	<b>88,394</b>	<b>16,169</b>	<b>6,544</b>	<b>111,107</b>
<b>Other Statistics</b>				
Electoral Roll	96	38	25	159
Regular congregation- adult	63	17	18	98
Regular congregation- child	6	1	4	11
Weddings	11	6	0	17
Funerals	18	14	3	35
Baptisms	16	16	0	32

More detailed data and graphs are available on the Vacancy for Rector webpage on our website and also through the diocese by request.

[Vacancies- Rector – The Benefice of Redruth with Lanner & Treleigh \(redruthchurch.org.uk\)](https://www.redruthchurch.org.uk/vacancies-rector)